



# Innovative Gear Manufacturing Solutions

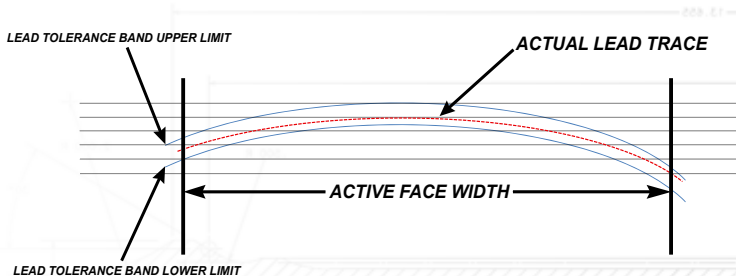
## Point-To-Point Array Hobbing

**Industry Applications:** Aerospace / Aviation

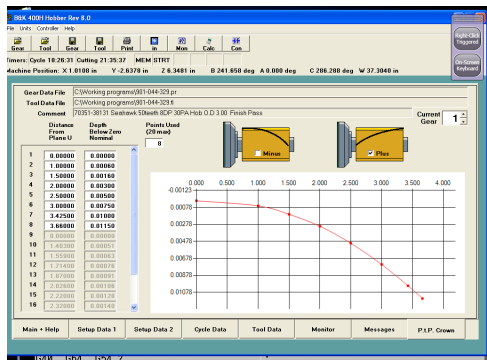
**Product Applications:** Aircraft Spline Shafts

Bourn & Koch, Inc. has developed an easy to use and program Point-To-Point Array hobbing application to our Human Machine Interface (HMI) on our H-Series Horizontal Gear Hobbing Machines.

The use of Point-To-Point Array allows the operator to select the resolution of the curve of a gear tooth from seven (7) to twenty (20) points, effectively allowing for more precise control over the desired lead shape of the gear tooth being cut.



## Bourn & Koch Hobbing HMI



The HMI for our H-Series Horizontal Gear Hobbing Machines is designed to allow for the precise programming of your gears with ease. Complex cutting operations such as Point-To-Point Arrays are simple to program on our HMI.

The conversational software guides the operator through the process, incorporating error-proofing, data validation and correction.